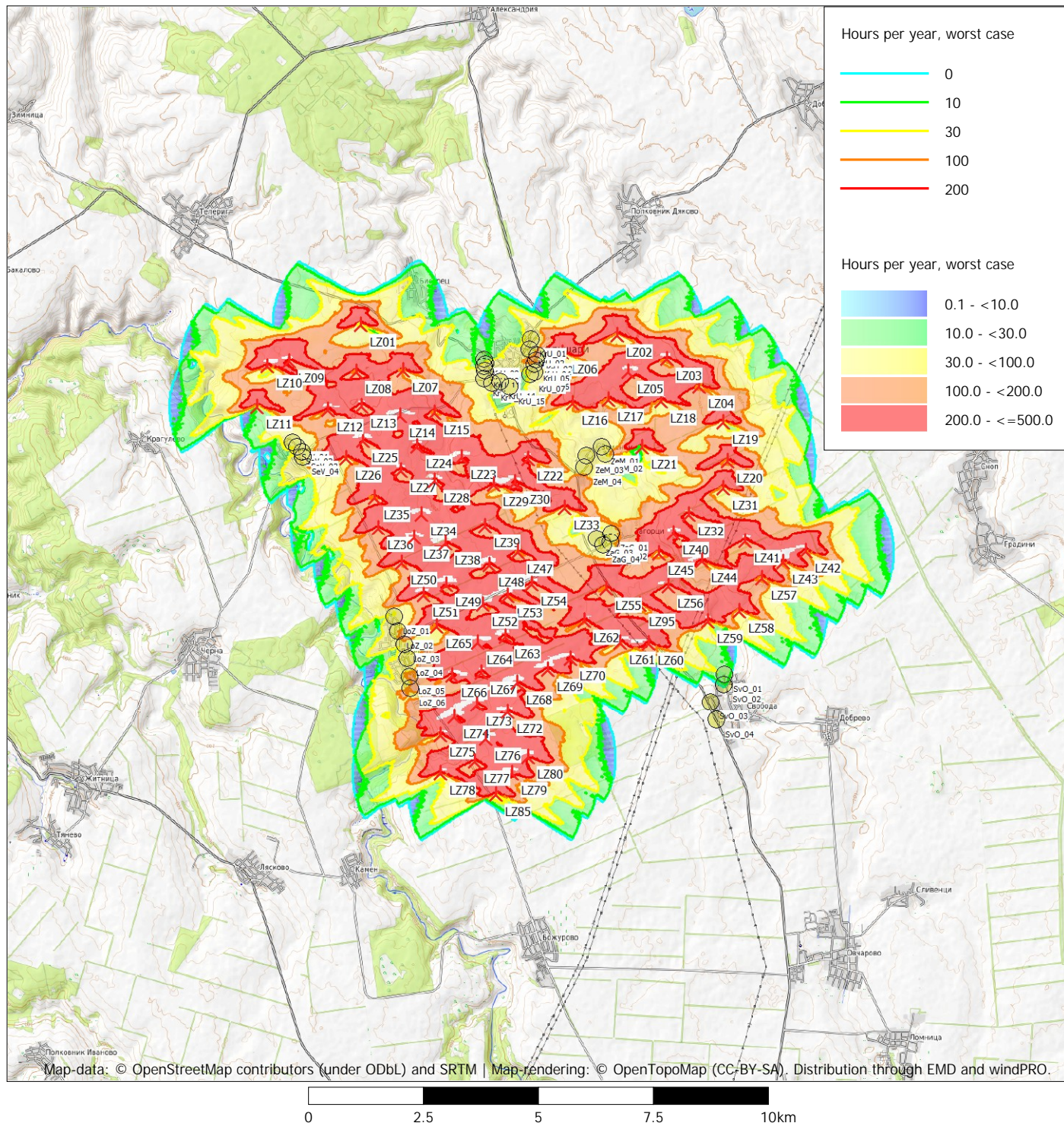


SHADOW - Map

Calculation: Worst Case



New WTG

Map: OpenTopoMap, Print scale 1:125,000, Map center Geo WGS84 East: 27.761670° E North: 43.780657° N

Shadow receptor

Flicker map level: Project Wizard Elevation Data Grid (EU-DEM: Pan-European DSM - 25m grid - Version 1.1)

Time step: 3 minutes, Day step: 7 days, Map resolution: 20 m, Visibility resolution: 10 m, Eye height: 1.5 m